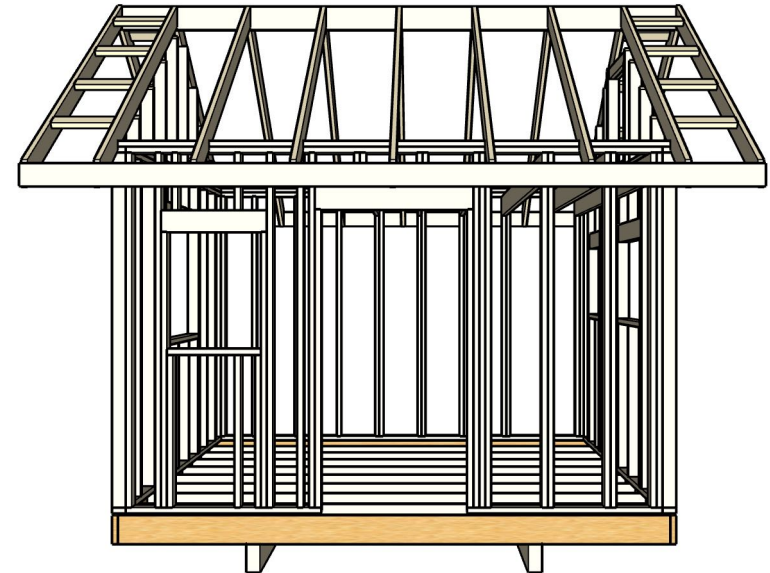
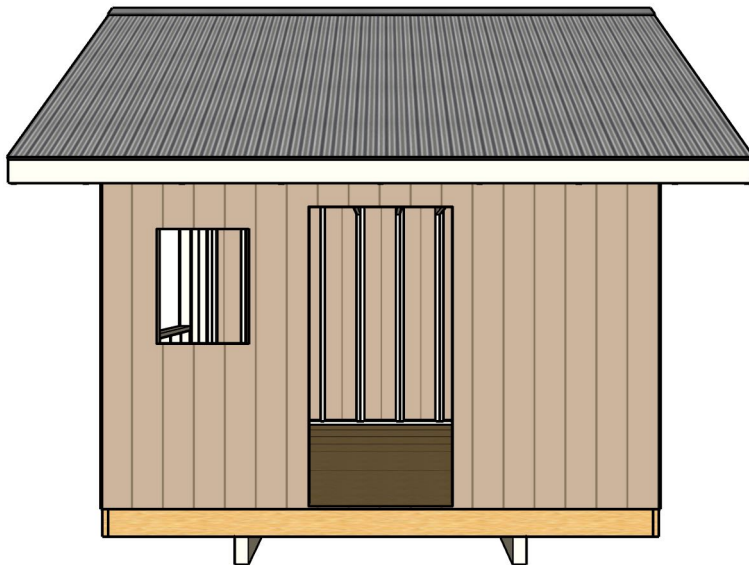
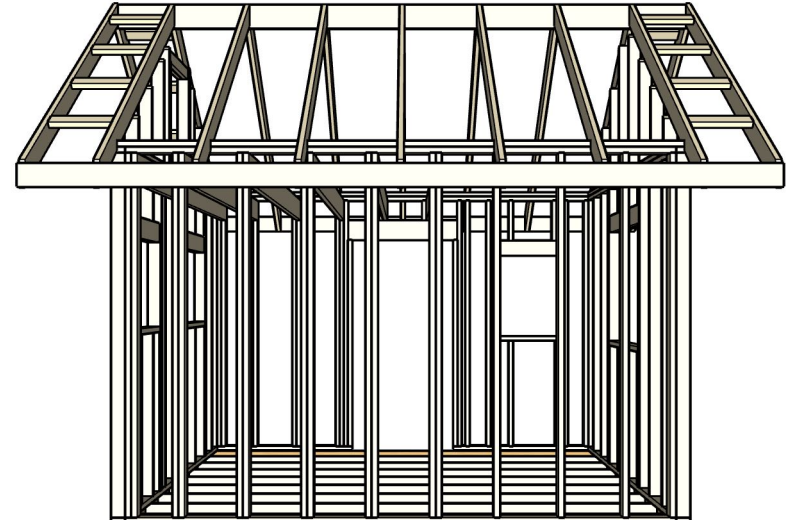
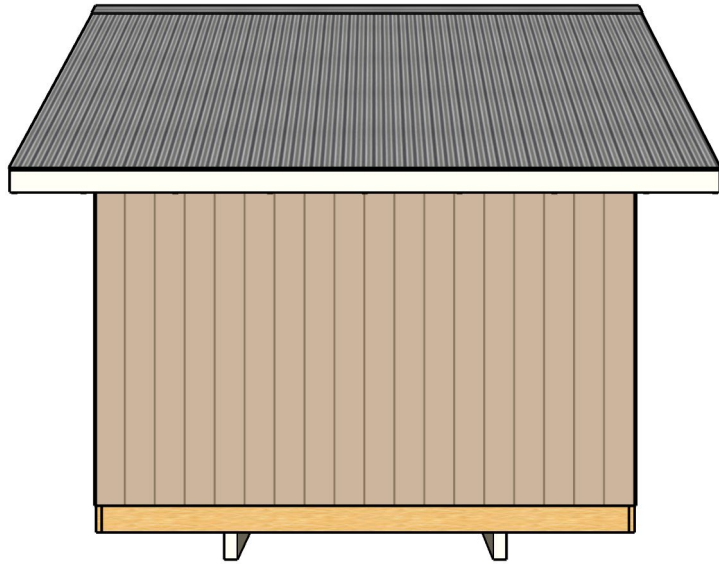
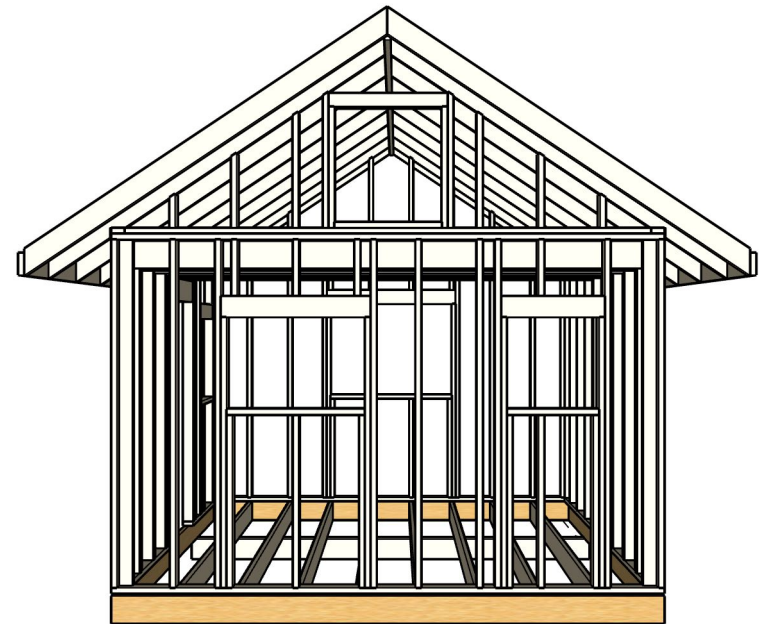
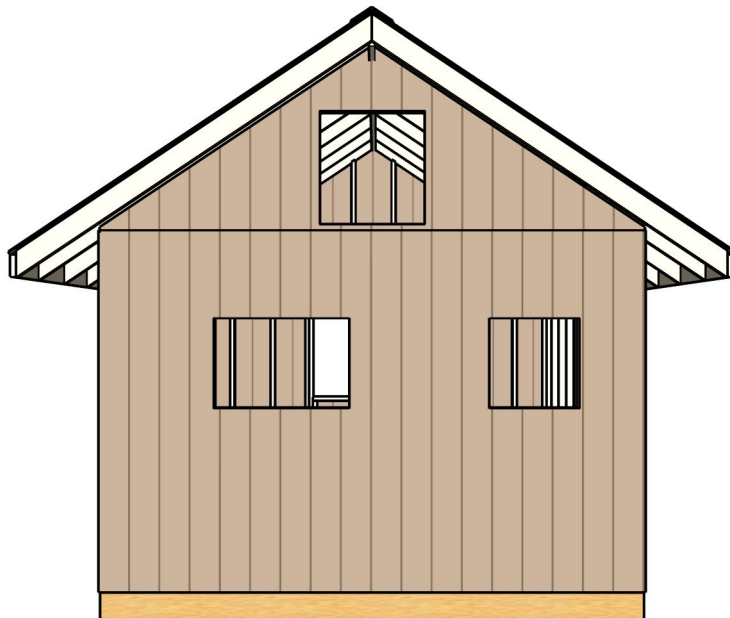
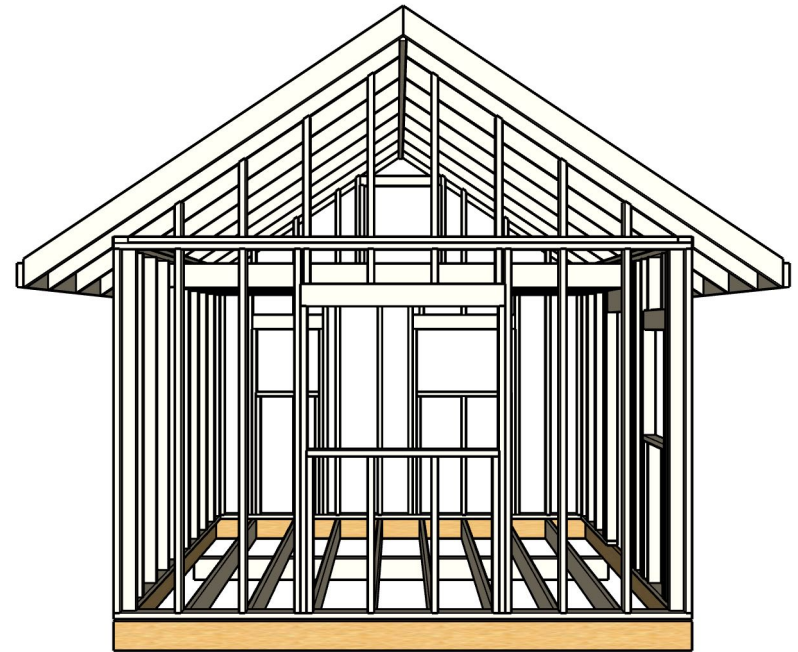
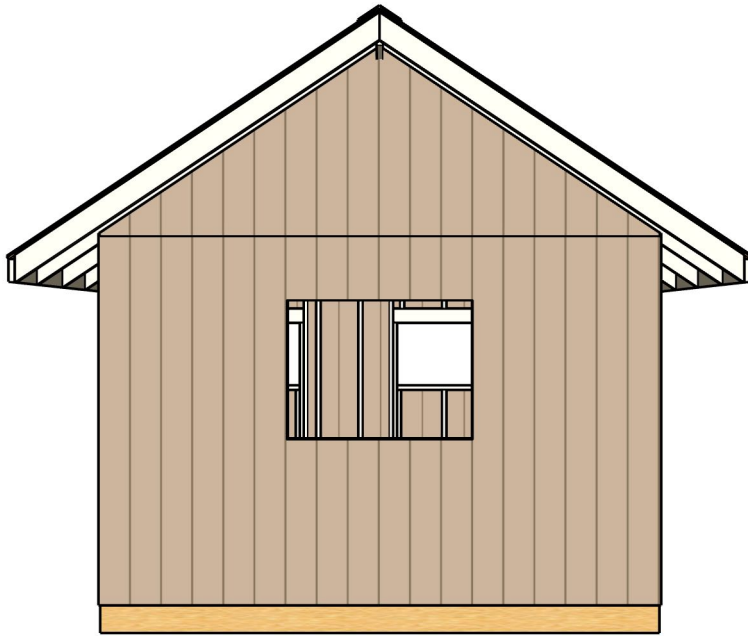
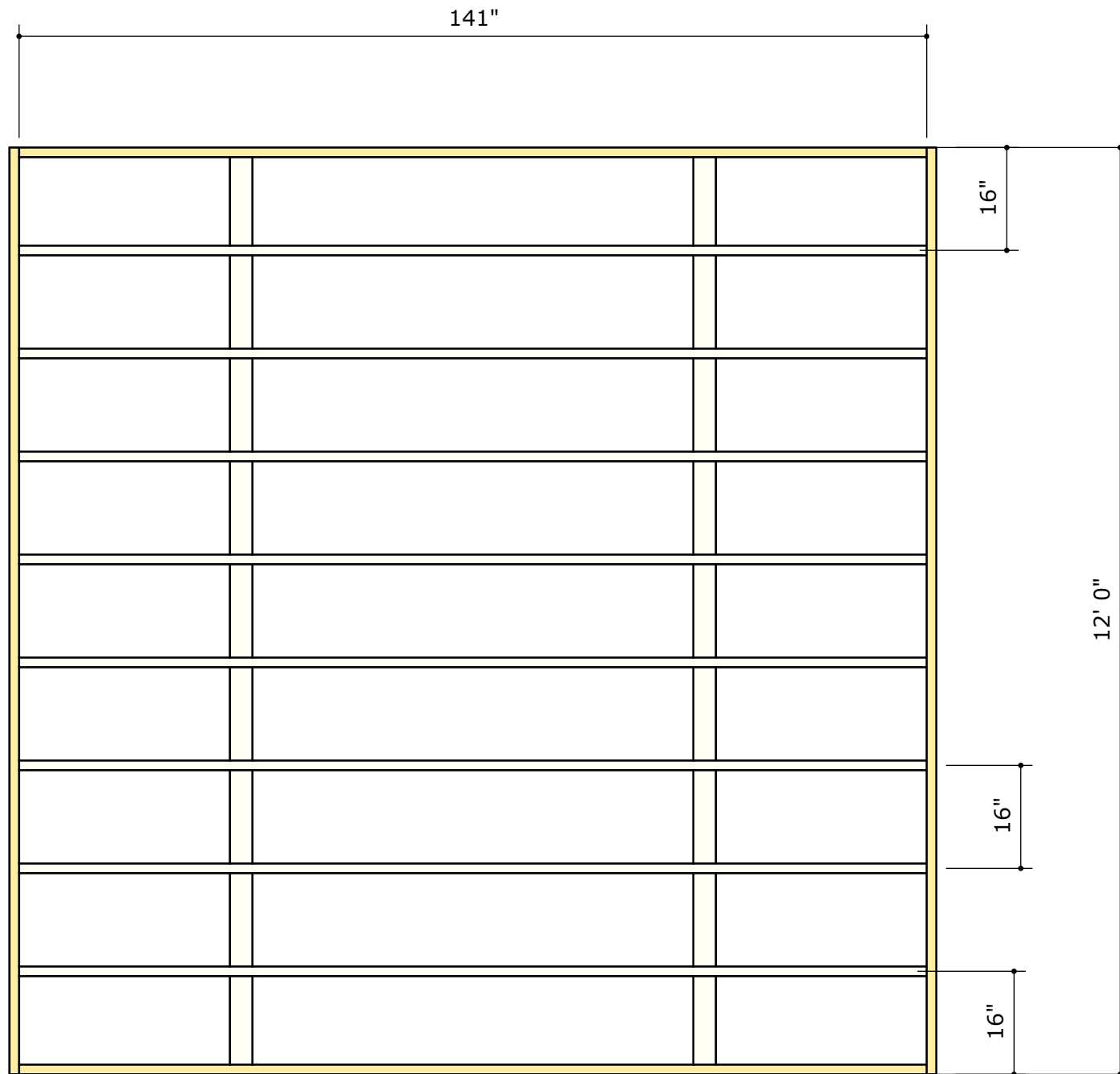


Quantity	Material	What
2	4"x8"x12'	Skids
18	2"x6"x12'	Floor Joists
12	2"x4"x12'	Top + Bottom Plates
1	2"x8"x8'	Door Header
4	2"x6"x8'	Window Header
90	2"x4"x8'	Wall Studs
2	2"x6"x16'	Facia Board
1	2"x8"x16'	Ridge Board
18	2"x6"x10'	Rafters
14	19/32"x4'x8' Plywood	Floor + Roof Sheathing
18	T1-11 Siding	Wall + Gable End Siding
120 ft	3' Width Roofing felt	
144 ft	3' Width Vapor Barrier	
16	26" x 10' Metal Roof Panels	Will need to be cut down
1	36" x 48" Window	
1	24" x 24" Window	
1	24" x 36" Window	
1	24" x 30" Window	Big Box stores sell affordable single pane windows in these sizes. They are all 0.5" under the listed dimension to fit in the planned window framing.
1	38" x 76" Door	Although they can be found, This is not a common door size. We cut a door we had in order for it to fit.



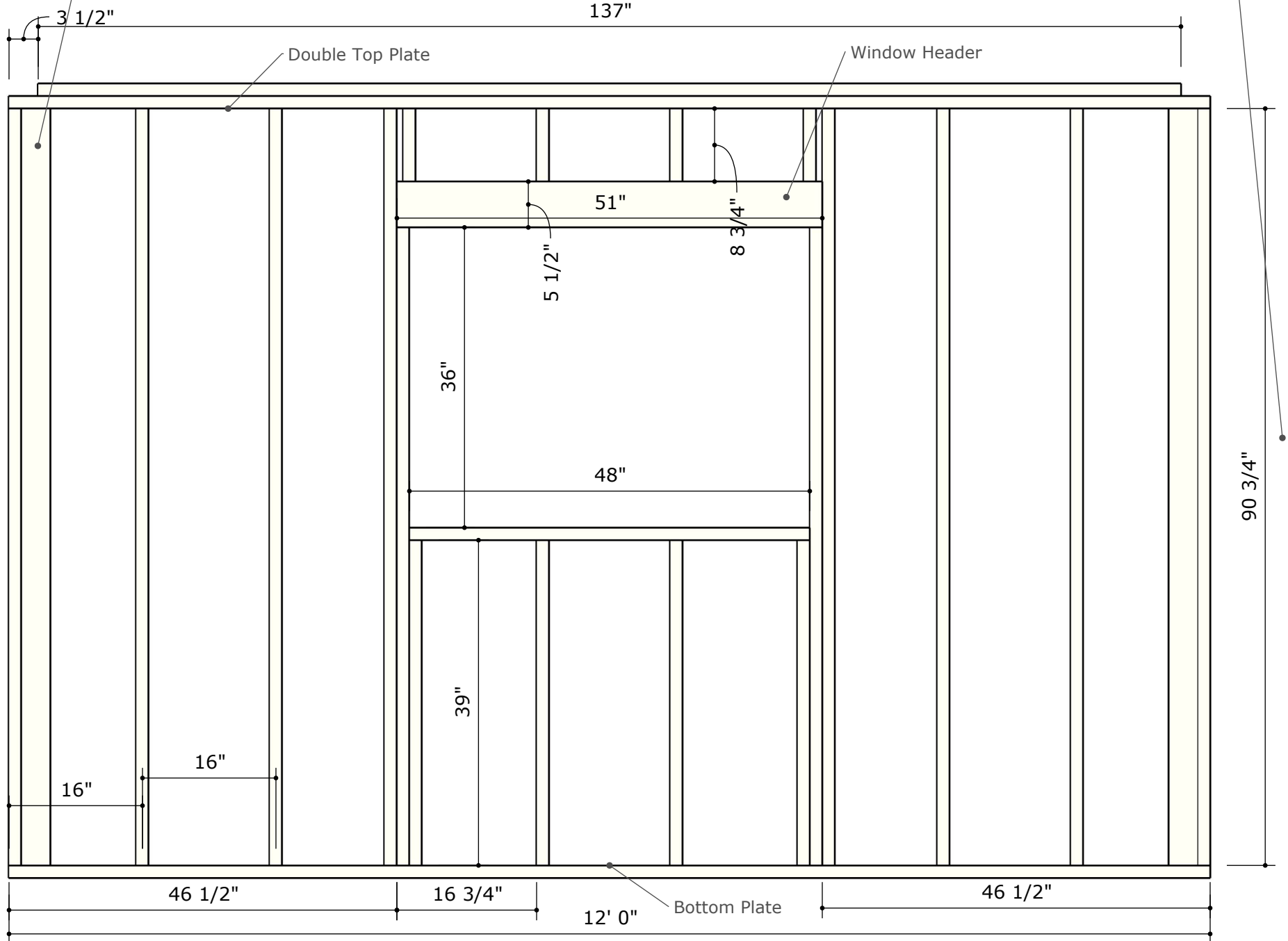


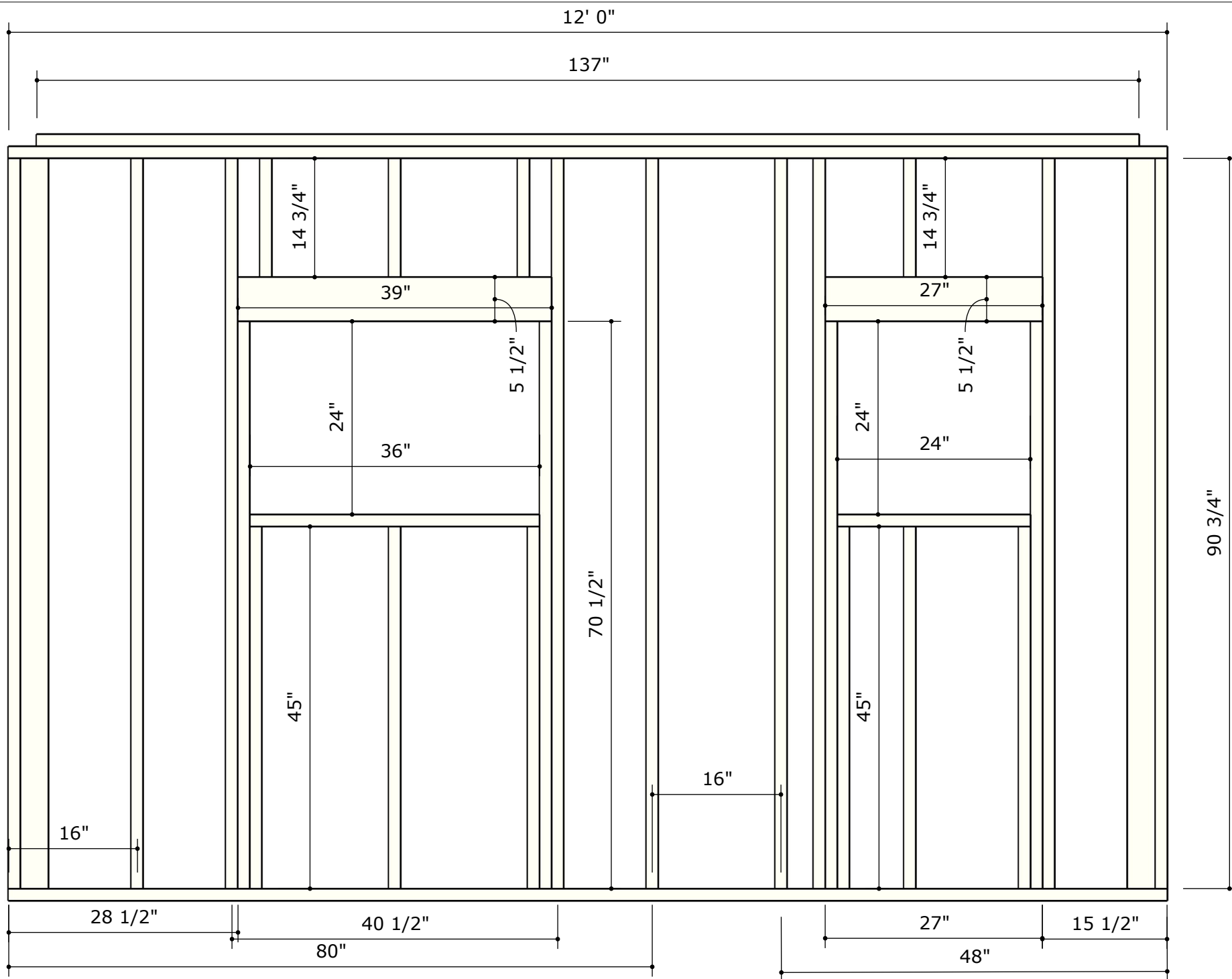


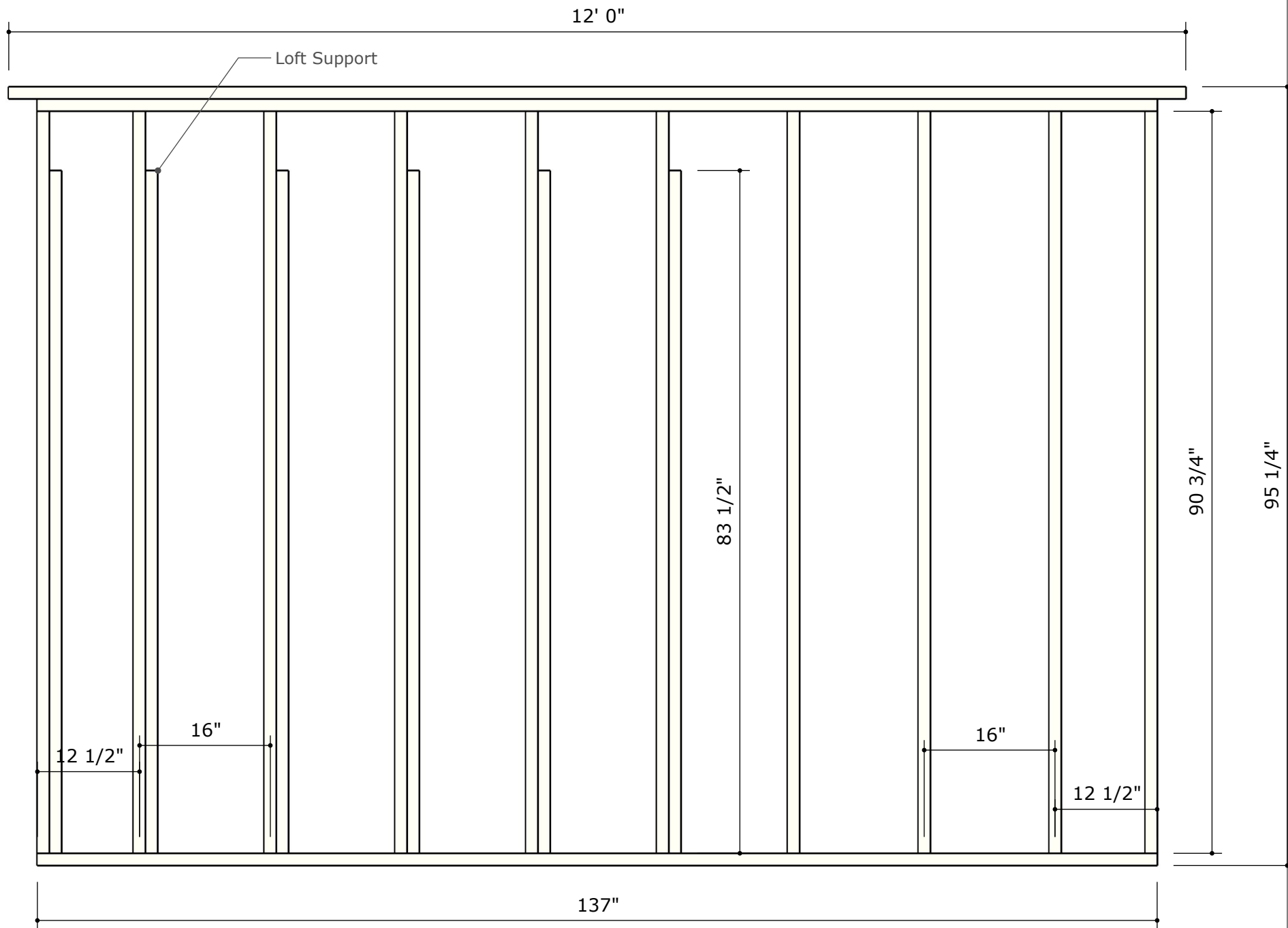


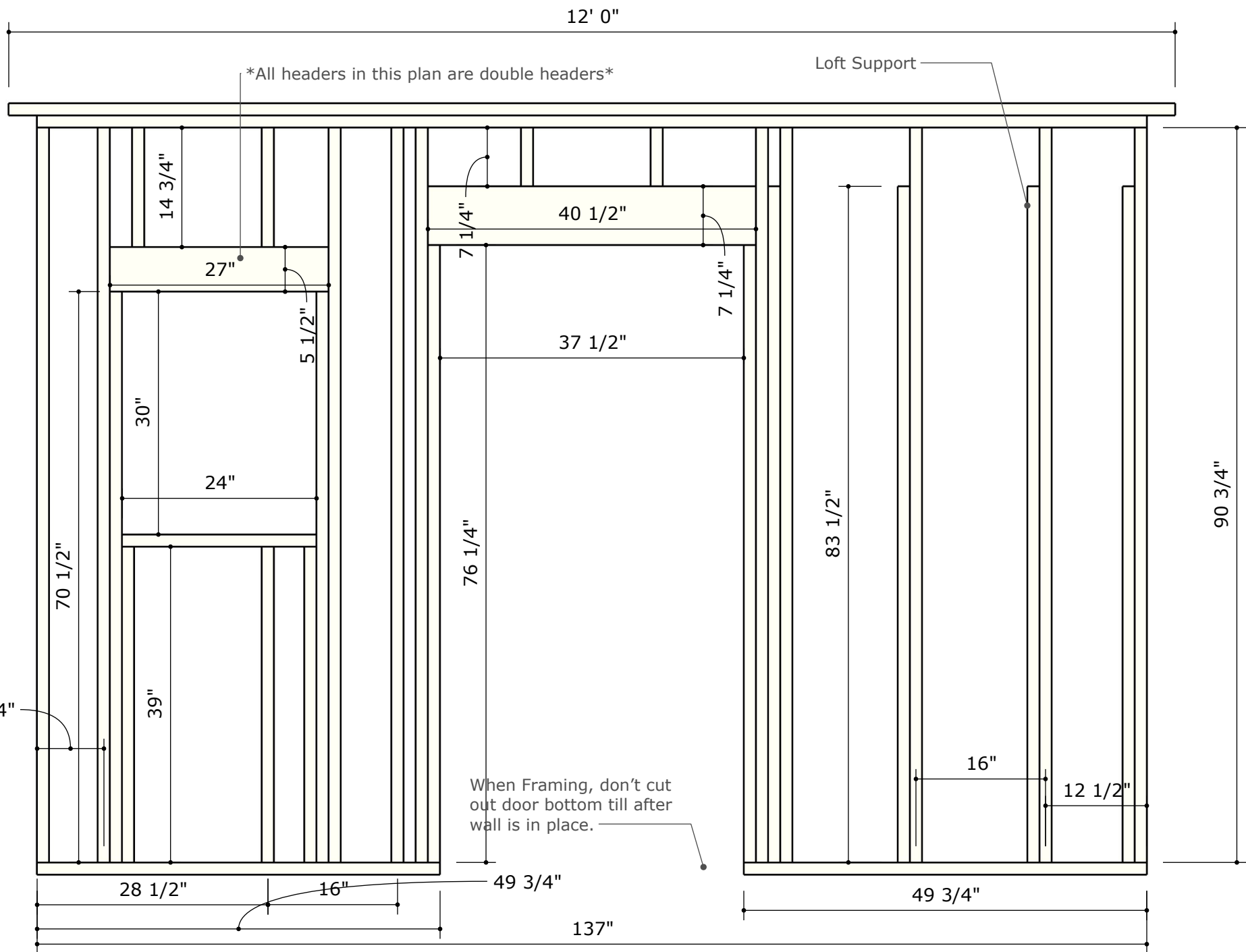
Total Wall Height is 95 1/4" to leave 3/4" plywood to hang below wall and extend over floor sheathing.

This is called a California Corner, it is used as a surface to nail the adjacent wall to.









I recommend cutting the loft joist a tad less then 12', this allows room to install.

The loft joist sit on the supports as shown

